

Supplement of Atmos. Chem. Phys., 18, 18063–18078, 2018  
<https://doi.org/10.5194/acp-18-18063-2018-supplement>  
© Author(s) 2018. This work is distributed under  
the Creative Commons Attribution 4.0 License.



*Supplement of*

## **Spatial and temporal changes in SO<sub>2</sub> regimes over China in the recent decade and the driving mechanism**

**Ting Wang et al.**

*Correspondence to:* Ting Wang (wangting@mail.iap.ac.cn)

The copyright of individual parts of the supplement might differ from the CC BY 4.0 License.

## Supplementary Figures

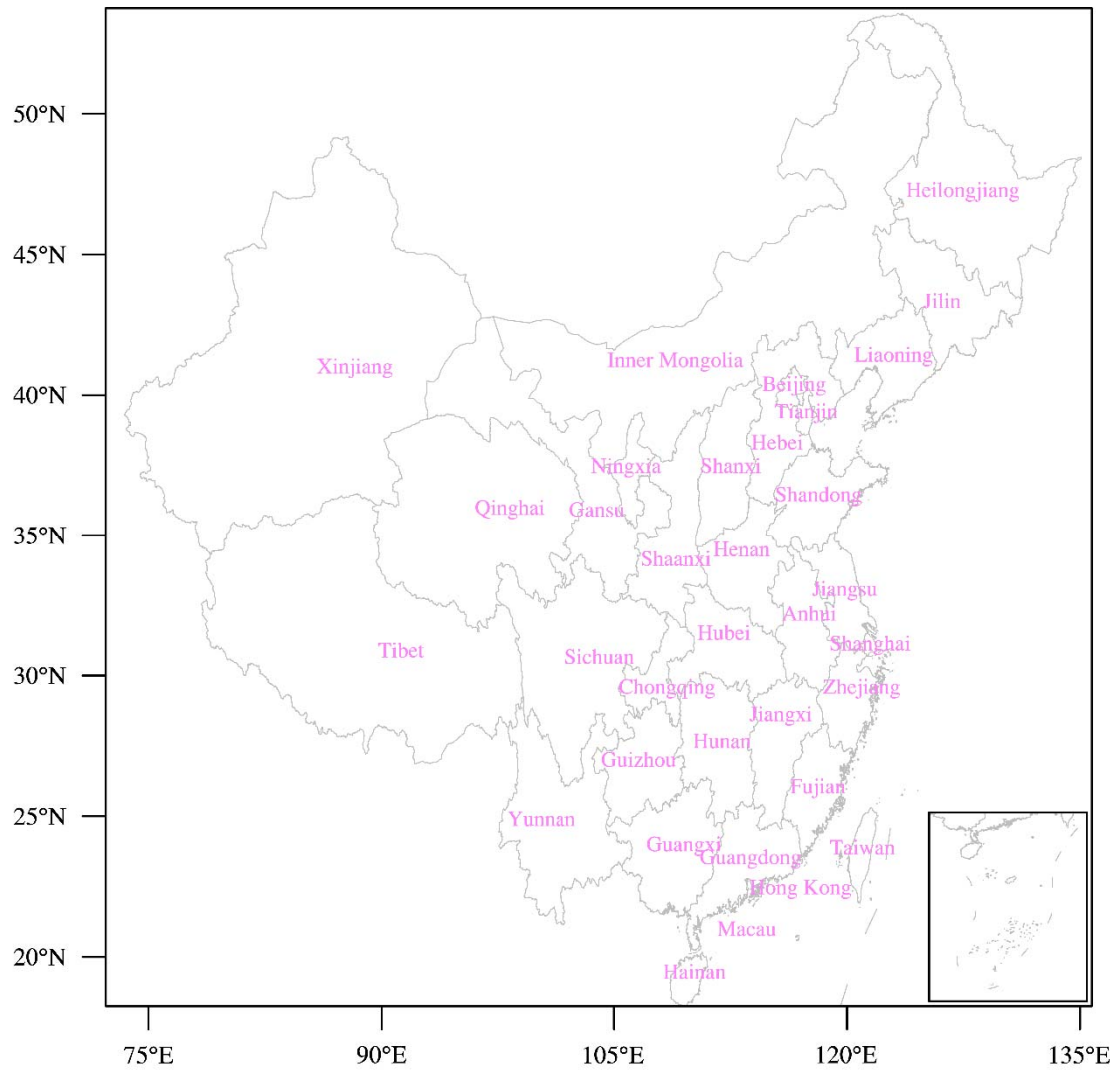


Figure S1 Provinces of China

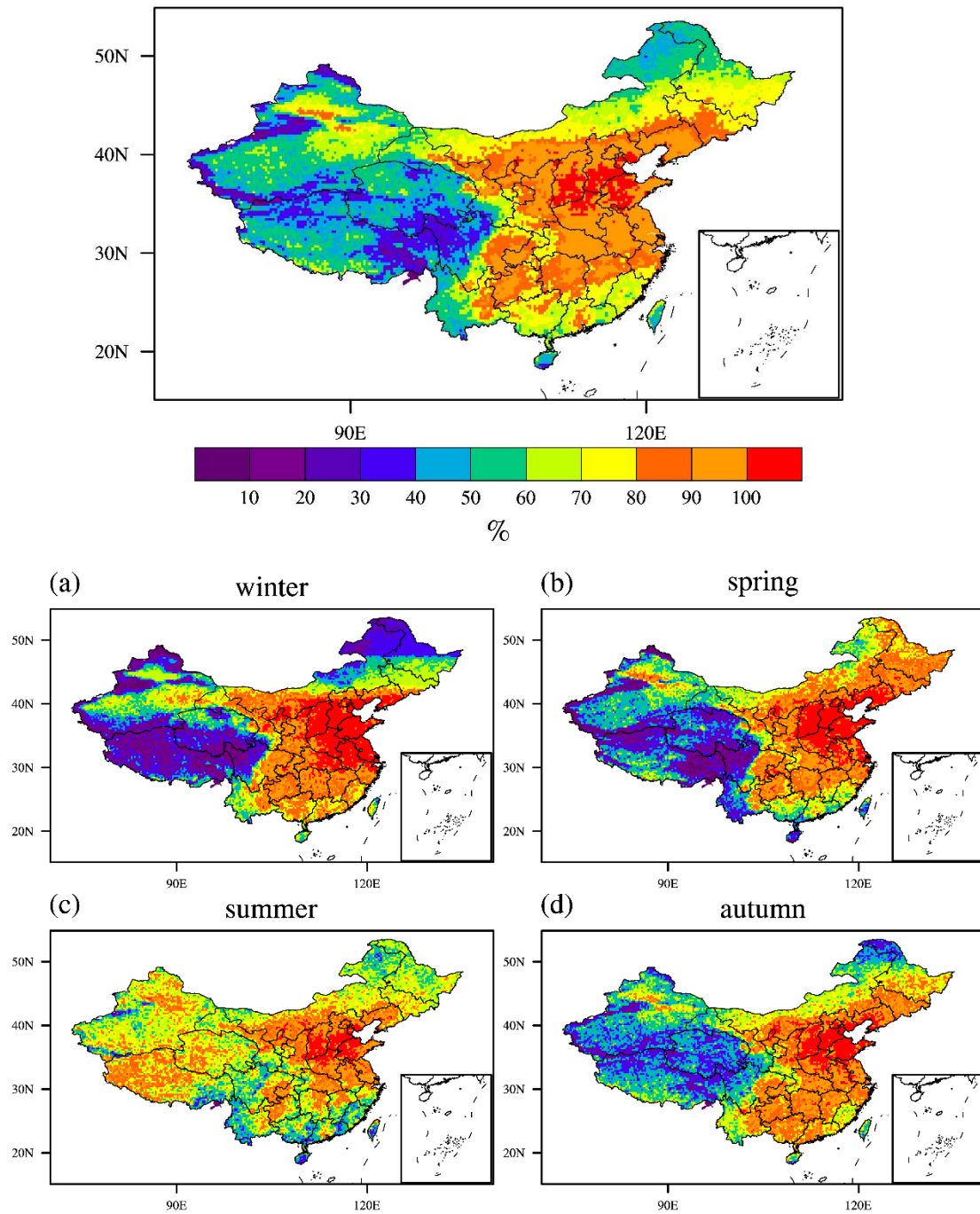


Figure S2 Percent (%) of non-missing SO<sub>2</sub> values at each of the grid points for full year (top panel) and individual seasons (a, b, c, d).

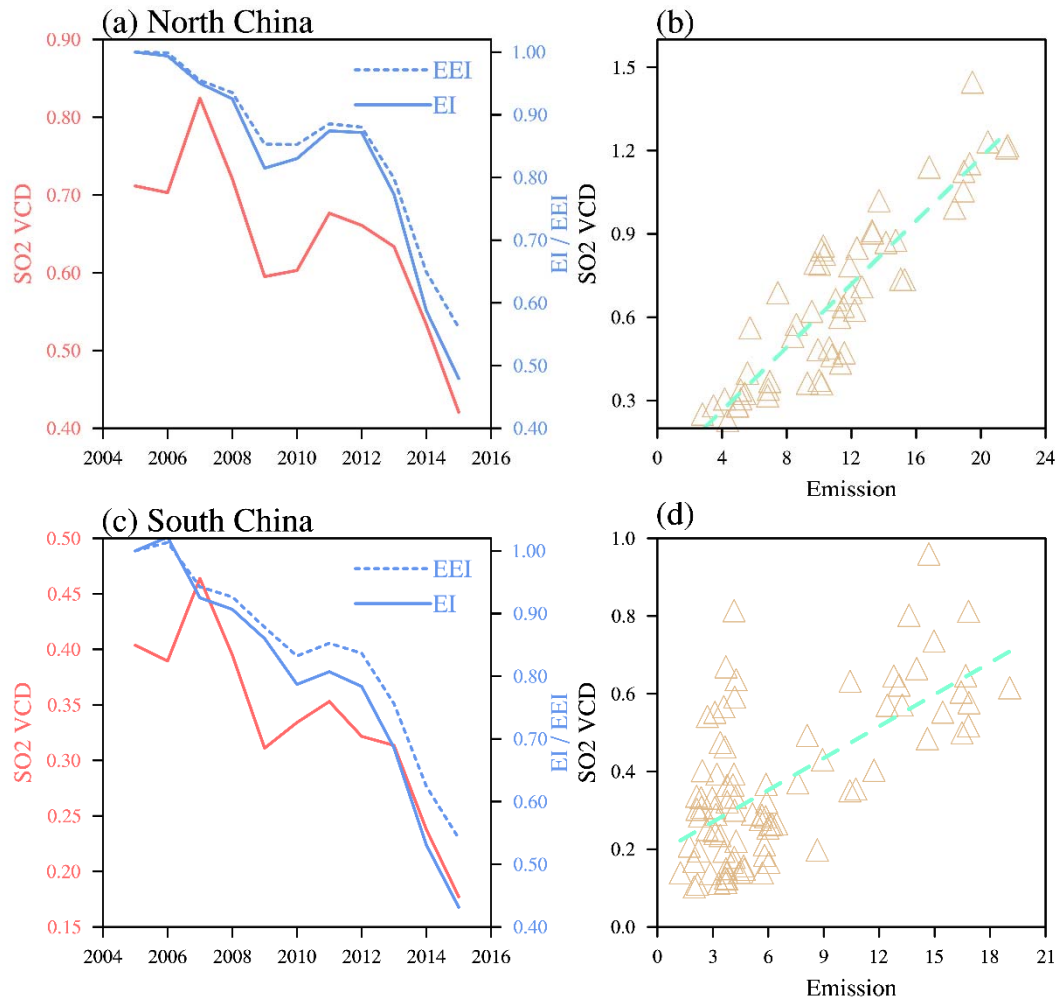


Figure S3 The same as Figure 10 in the main text, but for MEIC inventory.

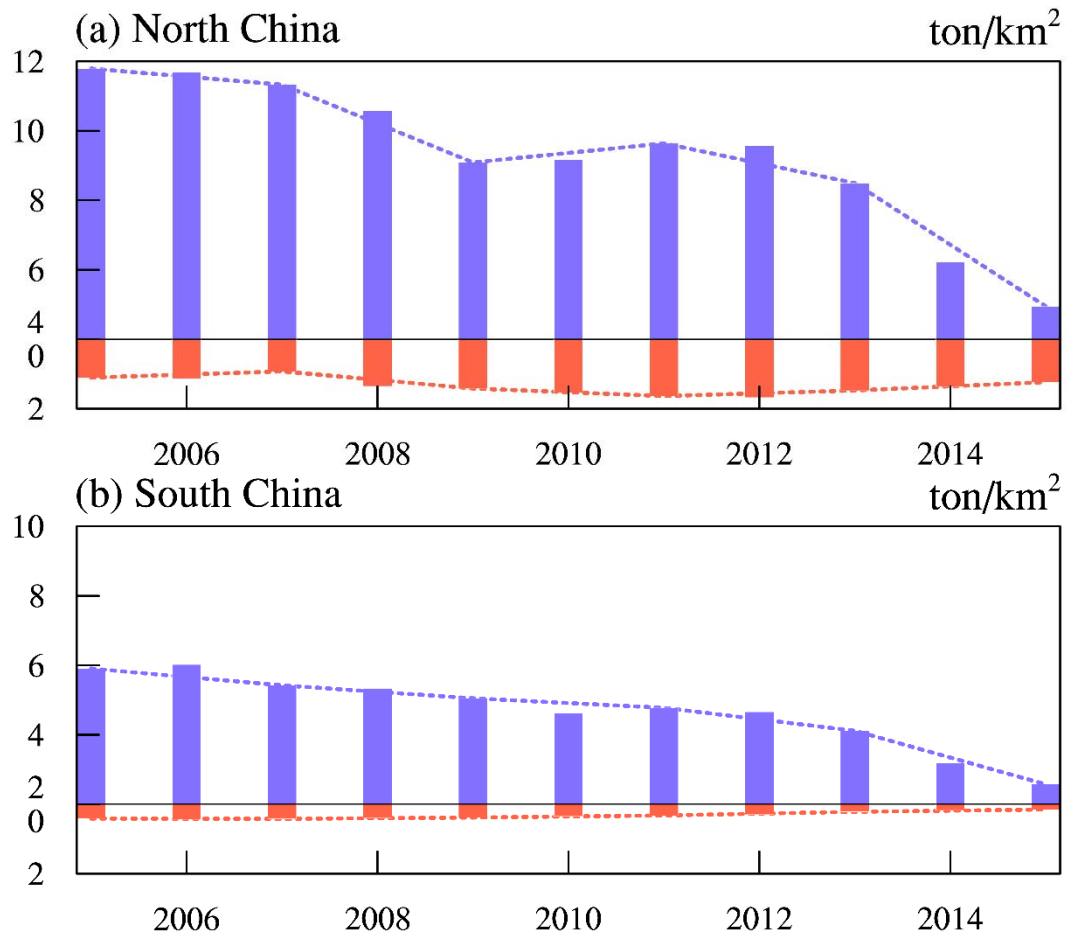


Figure S4 The same as Figure 11 in the main text, but for MEIC inventory.