

Figure 1: The Flexpart vertically integrated residence time of the particles for the air mass with the highest SO_2 signature intercepted by the Falcon at 10:40 UTC. The numbers superimposed on the shading are the days back in time. This product indicates where the air came from (but without altitude information). The figure suggests that the probed air mass originated 8-10 days prior to the measurements primarily from a region in East Asia. For a more detailed discussion view paper 1.

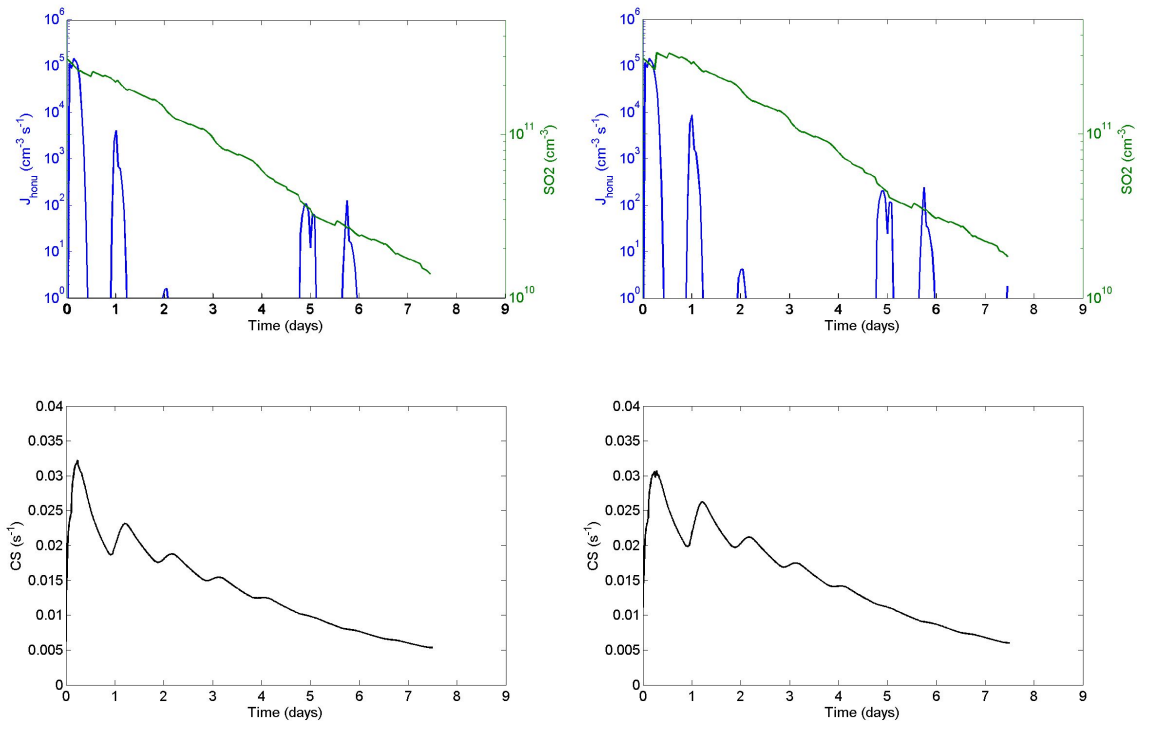


Figure 2: SO_2 concentration, nucleation rate J and condensation sink CS for AERO-FOR model run A (left) and E (right).

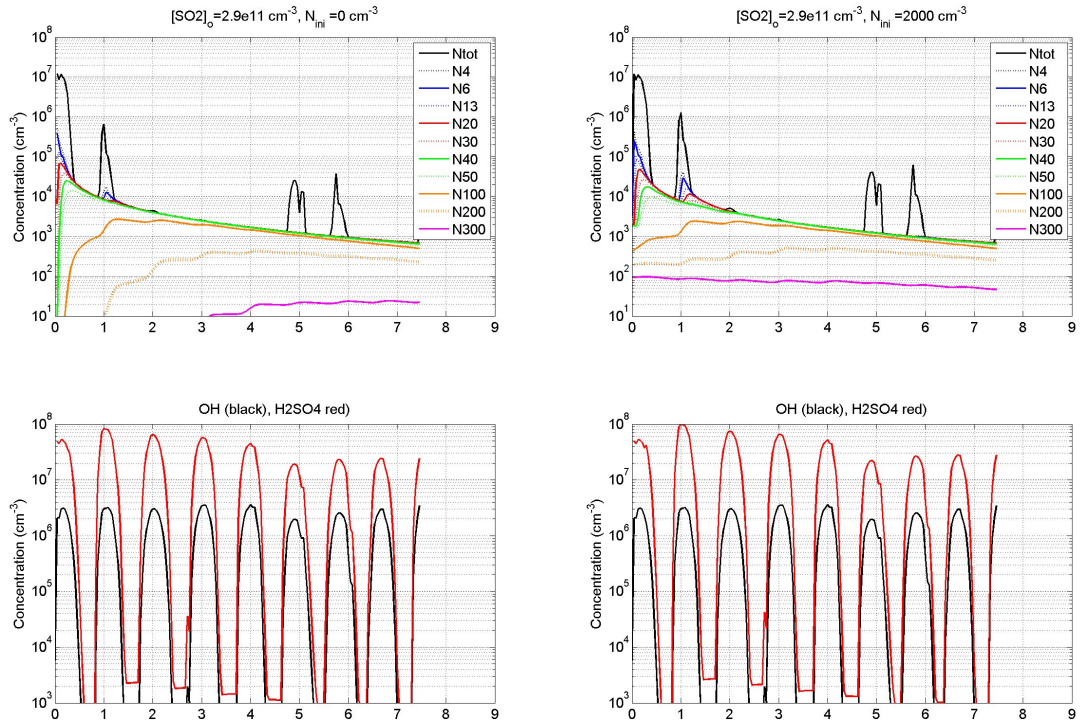


Figure 3: Particle concentration N_i of particles with diameters larger than i nm, OH concentration and H₂SO₄ concentration for AEROFOR model run A (left) and E (right).

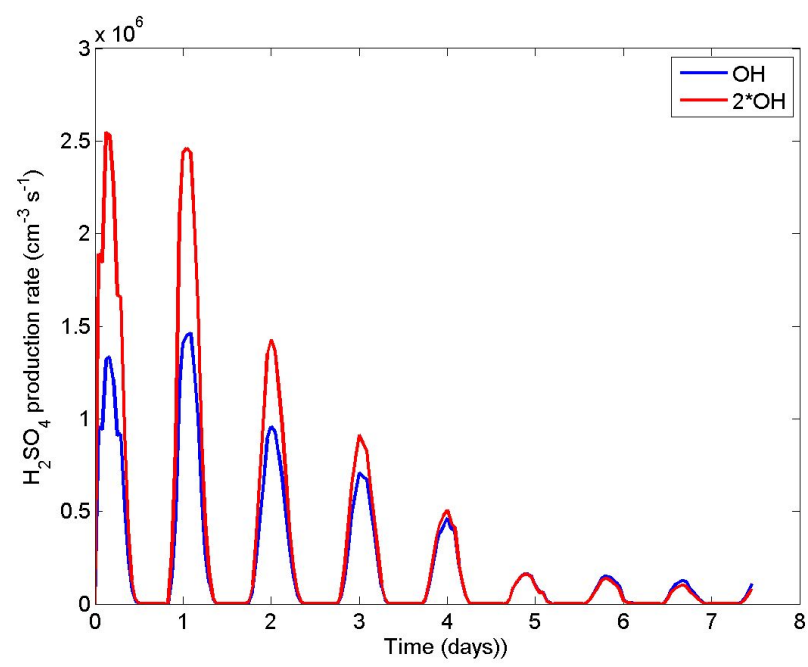


Figure 4: H_2SO_4 production rate for AEROFOR model run A.

NOAA HYSPLIT MODEL
Forward trajectory starting at 1100 UTC 03 May 06
GDAS Meteorological Data

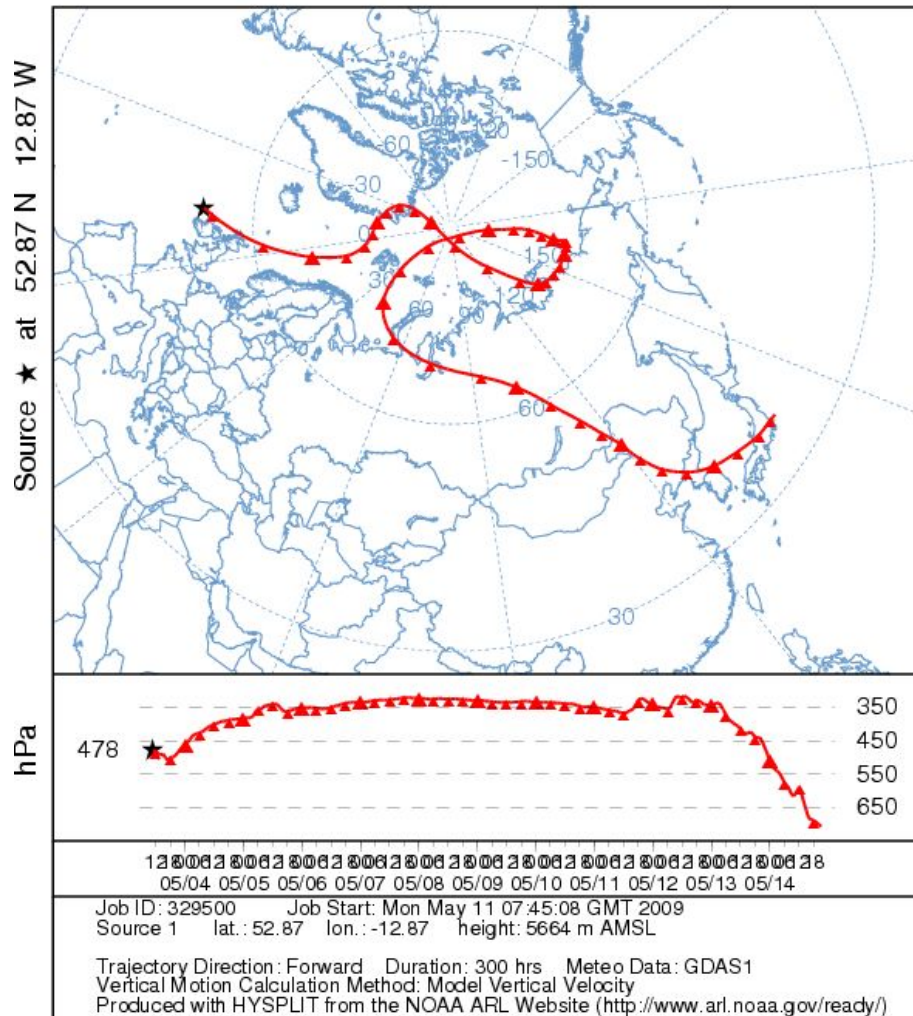


Figure 5: Hysplit forward trajectory starting at 52.87° N and 12.87° W and at 11 UTC on 3 May 2006, starting pressure altitude is 478 hPa.