

## **ELECTRONIC SUPPLEMENT FOR**

Vertical profiles of nitrous acid in the nocturnal urban atmosphere of  
Houston, TX

March 21, 2011

K. W. Wong<sup>1</sup>, H.-J. Oh<sup>1</sup>, H.-J. Oh<sup>2</sup>, B. Rappenglück<sup>2</sup>, J. Stutz<sup>1</sup>

<sup>1</sup>University of California, Los Angeles; Department of Atmospheric and Oceanic Sciences, Los Angeles, CA, USA,

<sup>2</sup>Earth and Atmospheric Sciences Department, University of Houston, Houston, TX, USA,

SUPPLEMENT INCLUDES:

Expanded figures 4, 5, 6

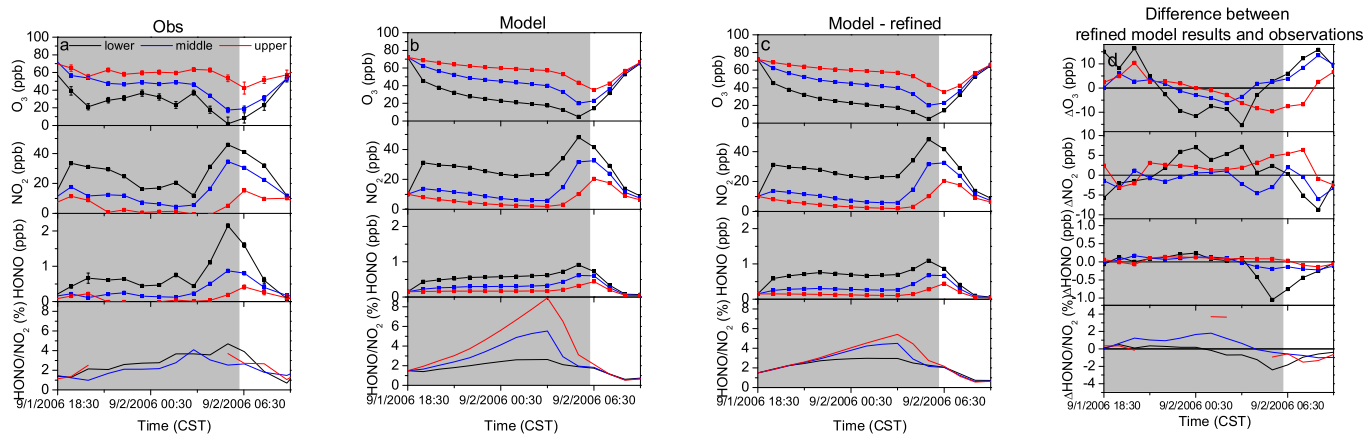


Figure 4: Comparison of HONO, NO<sub>2</sub>, O<sub>3</sub> mixing ratios and HONO to NO<sub>2</sub> ratios between observations (panel a), model results (panels b and c), and difference between the observations and the refined model run (panel d) on 1–2 September 2006. (Mixing ratios at lower, middle and upper altitudes are plotted in black, blue and red respectively.)

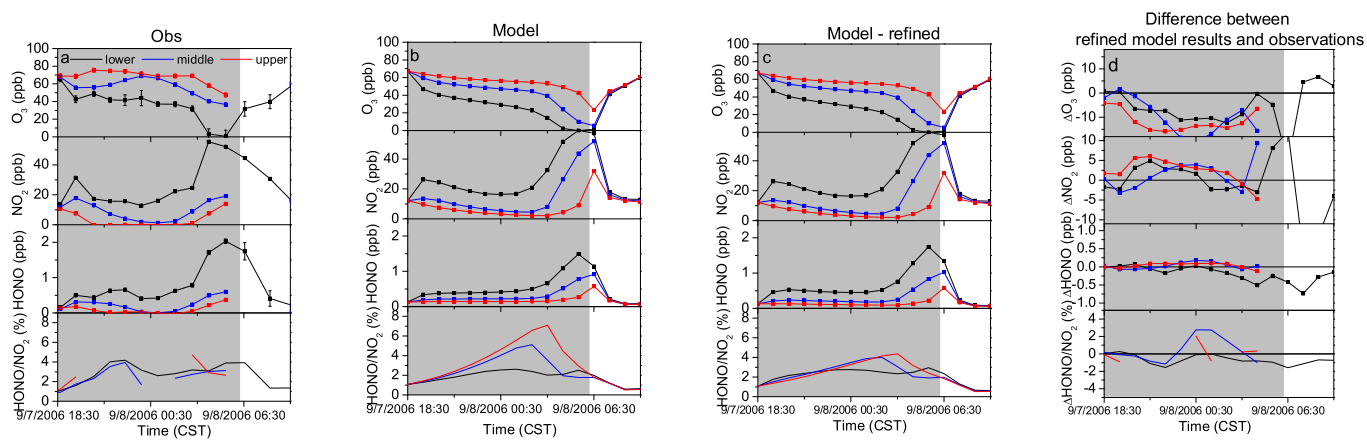


Figure 5: Comparison of HONO, NO<sub>2</sub>, O<sub>3</sub> mixing ratios and HONO to NO<sub>2</sub> ratios between observations (panel a), model results (panels b and c), and difference between the observations and the refined model run (panel d) on 7–8 September 2006. (Mixing ratios at lower, middle and upper altitudes are plotted in black, blue and red respectively.)

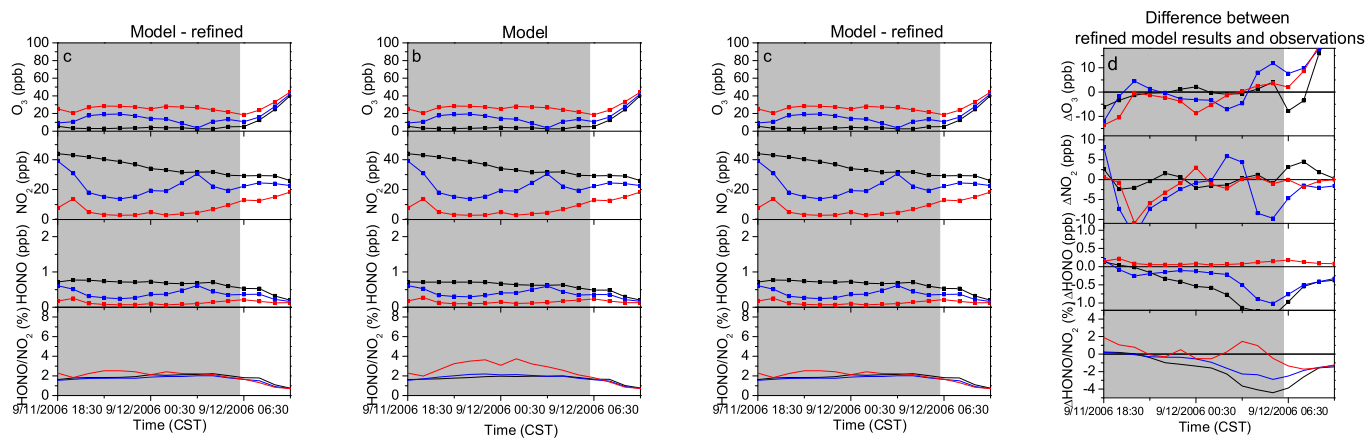


Figure 6: Comparison of HONO, NO<sub>2</sub>, O<sub>3</sub> mixing ratios and HONO/NO<sub>2</sub> between observations (panel a), model results (panels b and c), and difference between the observations and the refined model run (panel d) on 11–12 September 2006. (Mixing ratios at lower, middle and upper altitudes are plotted in black, blue and red respectively.)