

Figure S1: Simulated (continuous lines) and observed (black dots) temporal profile of the major m/z peaks (at $M+1$) detected by the CIR-TOF-MS. The sum of all simulated species of a given mass M (within $\pm 0.5 \text{ g mol}^{-1}$) is shown in red and the most dominant simulated species contributing to that total are shown individually in green, blue and violet.

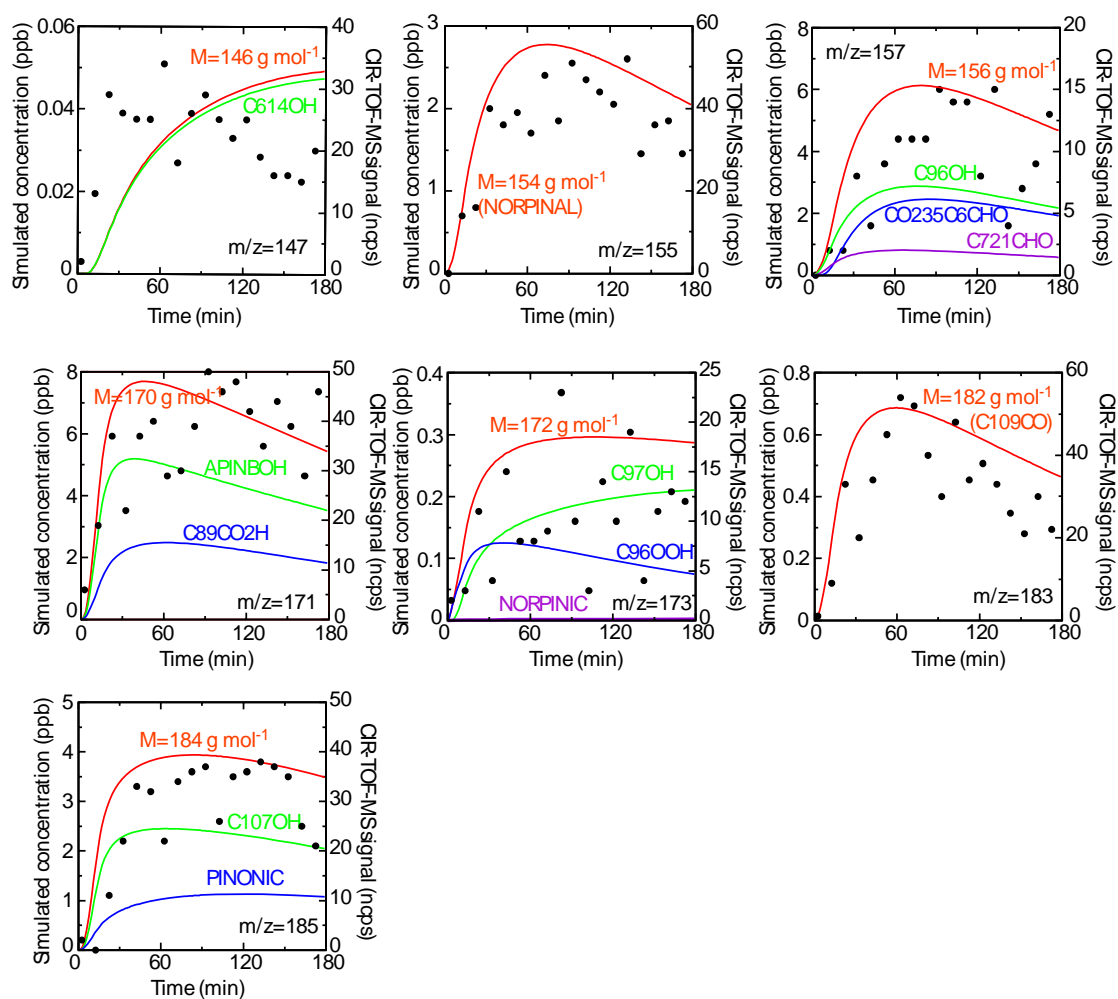


Figure S2: Simulated (continuous lines) and observed (black dots) temporal profiles of the major m/z peaks (at M+1) for SVOC detected by the CIR-TOF-MS. The sum of all simulated species of a given mass M (within +/- 0.5 g mol⁻¹) is shown in red and the most dominant simulated species contributing to that total are shown individually in green, blue and violet.

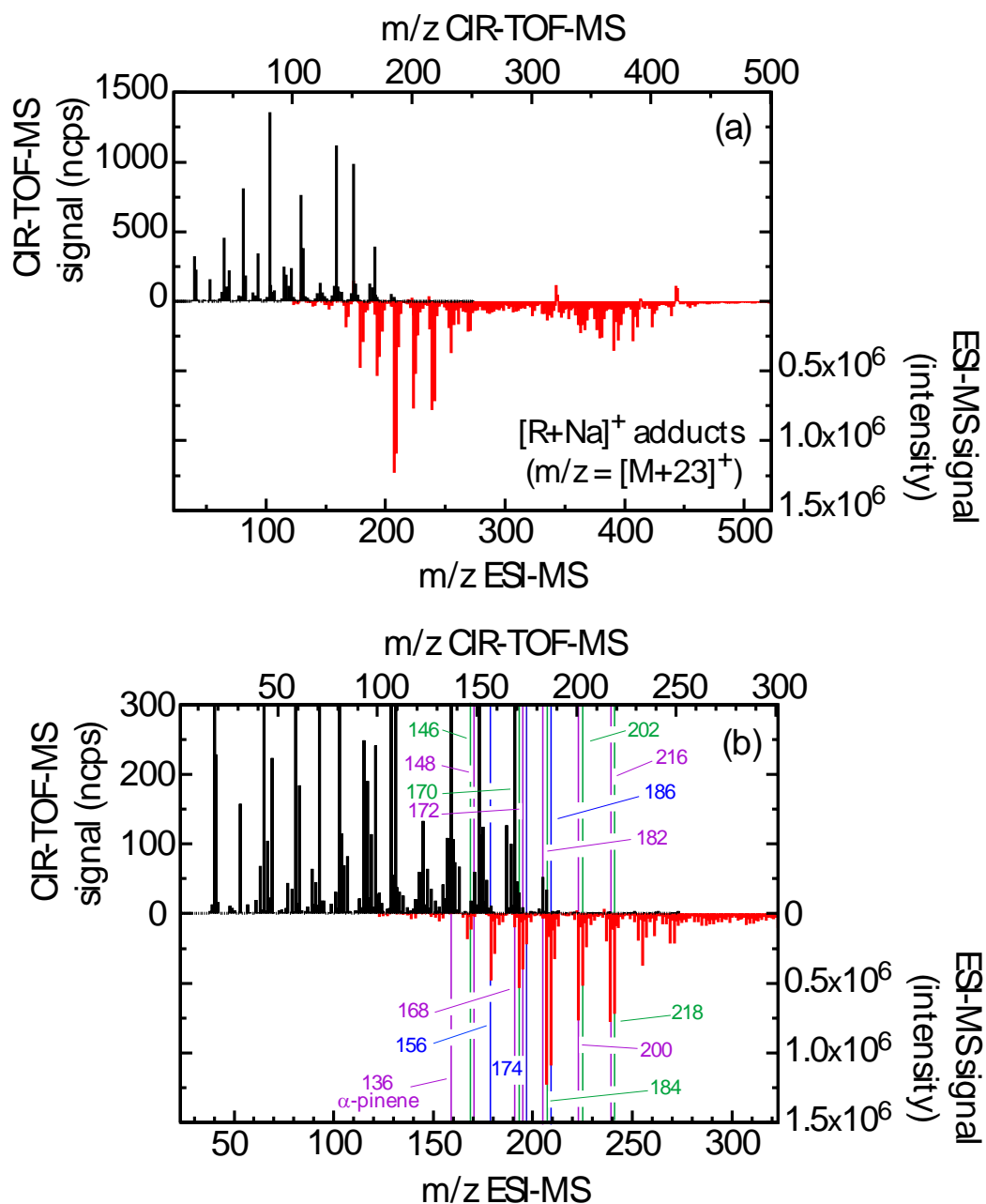


Figure S3: Comparisons between the gas phase mass spectrum recorded by CIR-TOF-MS (black) with the condensed phase mass spectrum recorded by positive ESI-MS (red). The molar masses associated with the observed peaks are shown in purple, blue and green in panel (b), in a zoom of panel (a).